

MISC.

BUMPER CURB CHAIR

Accurately positions and supports rebar during the casting of bumper (parking) curbs. One style comes with or without "ears".



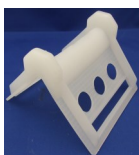
REBAR SAFETY CAP

Rounded protective cap for exposed rebar ends. One style is **OSHA APPROVED**.



CORNER GUARD/CHAIN GUARD

Protect precast concrete parts against damage during transport. Made from plastic. Reinforced edges. Side lugs prevent chains, straps, and ropes from slipping. These guards have a very long life.



BAR BOOT - PBB

Designed for foundations & vertical caisson bars. One size fits all. Self-locking.



PANEL PAD/CORNER PANEL PAD

Panel pads prevent staining of precast and prestressed concrete units during storage. Two styles. Both styles are scored for more economical use.

Corner panel pads protect units during transport and prevent straps from slipping over panel surface.



TEST CYLINDER MOLD

ASTM Standard. Proven line of disposable plastic molds for testing concrete.



STEEL & PLASTIC ANCHOR INSERT

Easy to use, inexpensive, durable non-corrosive glass fiber reinforced polyamide threaded inserts. Chemical resistant. Deep grooves for maximum pull out resistance. Meet Bell specifications. Other sizes.



PART NUMBER	DESCRIPTION	QTY PER BOX	BAR SIZE	COVER
1PB-3	BUMPER CURB	600	#3	2 1/4"
1PB-3-NO	BUMPER CURB	800	#3	2 1/4"
51B278	BUMPER CURB	750	#3 - #4	2 7/8"
1PB-4	BUMPER CURB	600	#4	2 1/4"
1PB-4-NO	BUMPER CURB	800	#4	2 1/4"
16SAFE39	SAFETY CAP	650	#3 - #9	—
16OSHA	OSHA APPROVED	300	#3 - #8	—
3CORNER	CORNER GUARD	STRAP WIDTH UP TO 4"		
6750030	CHAIN GUARD	1 3/4" WIDTH		
16PANEL	PANEL PAD	APPROX. 2 1/2" x 5 1/2"		
16PANEL24	PANEL PAD	APPROX. 2 1/2" x 24" L		
16BUBPANEL	PANEL PAD	APPROX. 2 1/2" x 6"		
6COPANPAD	CORNER PANEL PAD	APPROX. 2" x 3"		
4PBB614	BAR BOOT	50	#6 - #14	3"
161202-310	TEST CYLINDER	4" x 8" WITH DOMED LID		
161202-321	TEST CYLINDER	6" x 12" WITHOUT LID		
161202-322	6" CYLINDER LID	6" LID (domed or flat)		
11TPI025x150	PLASTIC ANCHOR INSERT	1/4" thread x 1 1/2" length		
11TPI038x150	PLASTIC ANCHOR INSERT	3/8" thread x 1 1/2" length		
3TPI038x150	PLASTIC ANCHOR INSERT	3/8" thread x 1 1/2" length		
16TPI050x150	PLASTIC ANCHOR INSERT	1/2" thread x 1 1/2" length		
11TPI050x175	PLASTIC ANCHOR INSERT	1/2" thread x 1 3/4" length		
11TPI050x275	PLASTIC ANCHOR INSERT	1/2" thread x 2 3/4" length		
13I4L	PLASTIC ANCHOR INSERT	1/2" thread x 2 5/8" length		
11TPI058x300	PLASTIC ANCHOR INSERT	5/8" thread x 3" length		
11TPI075x325	PLASTIC ANCHOR INSERT	3/4" thread x 3 1/4" length		
11TSI10-24x5%	ZINC ALLOY ANCHOR INSERT	10-24 thread x 11/16" L		
11TSI025x150	ZINC ALLOY ANCHOR INSERT	1/4" thread x 1 1/2" length		
11TSI038x100	ZINC ALLOY ANCHOR INSERT	3/8" thread x 1" length		
11TSI038x138	ZINC ALLOY ANCHOR INSERT	3/8" thread x 1 3/8" length		
11TSI050x150	ZINC ALLOY ANCHOR INSERT	1/2" thread x 1 1/2" length		
11TSI050x275	ZINC ALLOY ANCHOR INSERT	1/2" thread x 2 3/4" length		
11TSI058x150	ZINC ALLOY ANCHOR INSERT	5/8" thread x 1 1/2" length		
11TSI058x278	ZINC ALLOY ANCHOR INSERT	5/8" thread x 2 7/8" length		
11TSI075x169	ZINC ALLOY ANCHOR INSERT	3/4" thread x 1 1/2" length		
11TSI075x278	ZINC ALLOY ANCHOR INSERT	3/4" thread x 2 7/8" length		
6SIGNPOST	4" x 5" SIGN POST MARKER	430	#3	1"

MISCELLANEOUS

SAME DAY SHIPPING ON MOST ORDERS !!

800-836-6113

937-836-9296 * 836-9395 (FAX)



6113 BROOKVILLE SALEM RD
CLAYTON OH 45315

sales@blackthorn-inc.com
www.blackthorn-inc.com