

HOLE-FORMER / KNOCKOUT ANGLED ENTRY SLANT / SKEW

ROUND

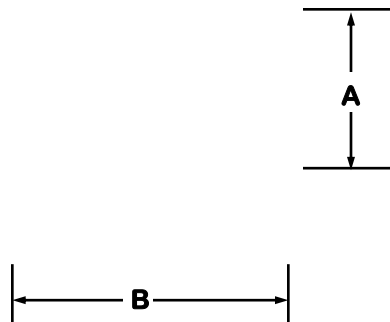
SLANT / SKEW (15° ANGLE)

UP TO
8" FLAT WALL

HOLE SIZE
(diameter)

| |
|-----|
| 16" |
| 18" |
| 20" |
| 22" |
| 24" |
| 27" |
| 30" |
| 32" |

HEIGHT = A
WIDTH = B
(A x B)



OVAL

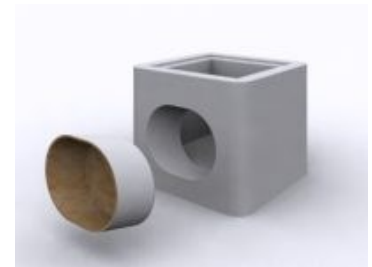
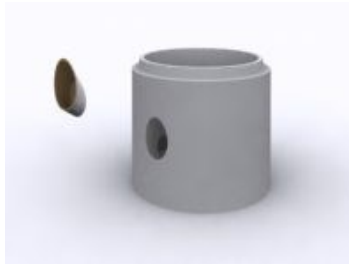
SLANT / SKEW (45° ANGLE)

UP TO
8" FLAT WALL

HOLE SIZE
(HEIGHT x WIDTH)

| |
|-----------|
| 20" x 28" |
| 24" x 27" |
| 24" x 32" |
| 29" x 37" |
| 34" x 42" |
| 38" x 46" |
| 45" x 53" |

CPH "cost per hole" is based on 500 uses, the average number of uses that customers get from a Blackthorn manufactured fiberglass hole-former, derived from a customer survey. Your number of uses could be more than 500. Average number of uses may vary.



We can build-up (add 25%) OR cut-down (add 10%) the wall of any Flatwall part to a non-standard wall thickness.

MOUNTING HARDWARE

MAGNETS
SLIDE BAR
NC THREAD INSERT
COIL INSERT (1/2" OR 3/4")
BOLT

BLACKTHORN MANUFACTURES CUSTOM FIBERGLASS PRODUCTS.
IF YOU NEED A SIZE NOT LISTED, CALL FOR A QUOTE.

800-836-6113

937-836-9296 * 836-9395 (FAX)



6113 BROOKVILLE SALEM ROAD * www.blackthorn-inc.com
CLAYTON OH 45315 * sales@blackthorn-inc.com