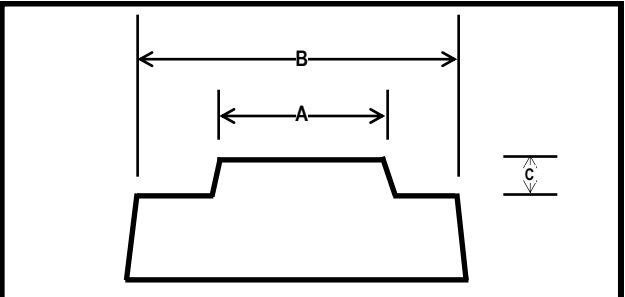


FLATWALL HOLE-FORMER STEPPED

HOLE SIZE SMALLER DIAMETER <i>stepped to</i> LARGER DIAMETER (A <i>stepped to</i> B)	WALL THICKNESS
9" dia. STEPPED TO 14" dia. (SMALL STEP 2")	UP TO 6"
10" dia. STEPPED TO 16" dia. (SMALL STEP 3")	UP TO 11"
12" dia. STEPPED TO 18" dia. - TWO CHOICES (SMALL STEP 2") <u>or</u> (SMALL STEP 4")	UP TO 16"
12" dia. STEPPED TO 20" dia. (SMALL STEP 3")	UP TO 16"
15" dia. STEPPED TO 20" dia. (SMALL STEP 3")	UP TO 12"
15" dia. STEPPED TO 22" dia. (SMALL STEP 2") <u>or</u> (SMALL STEP 4")	UP TO 12"
15" dia. STEPPED TO 24" dia. (SMALL STEP 3")	UP TO 16"
16" dia. STEPPED TO 20" dia. (SMALL STEP 2")	UP TO 8"
18" dia. STEPPED TO 24" dia. - TWO CHOICES (SMALL STEP 3") <u>or</u> (SMALL STEP 3")	UP TO 16"
18" dia. STEPPED TO 26" dia. - TWO CHOICES (SMALL STEP 3") <u>or</u> (SMALL STEP 4")	UP TO 12"
18" dia. STEPPED TO 28" dia. (SMALL STEP 3")	UP TO 16"
21" dia. STEPPED TO 30" dia. (SMALL STEP 3")	UP TO 16"
24" dia. STEPPED TO 34" dia. (SMALL STEP 3")	UP TO 16"
27" dia. STEPPED TO 34" dia. (SMALL STEP 4")	UP TO 12"
30" dia. STEPPED TO 40" dia. (SMALL STEP 3")	UP TO 16"
30" dia. STEPPED TO 42" dia. (SMALL STEP 3")	UP TO 16"
36" dia. STEPPED TO 48" dia. (SMALL STEP 3")	UP TO 12"
42" dia. STEPPED TO 54" dia. (SMALL STEP 4")	UP TO 12"
48" dia. STEPPED TO 62" dia. (SMALL STEP 4")	UP TO 12"

HEADWALL BEAUTIFICATION

CLOSED BACKS AVAILABLE
ALL PARTS ARE BRACED to assist in their removal.



A = SMALLER HOLE DIAMETER
B = LARGER HOLE DIAMETER
C = SMALL STEP

NOTE: We also have a *FSE-11-36*. This is a flatwall stepped hole-former for elliptical pipe. Step dimensions = 29" x 45" x 3" *stepped to* 40.75" x 57.5" x 8" step



- MOUNTING HARDWARE**
- MAGNETS
 - SLIDE BAR
 - NC THREAD INSERT
 - COIL INSERT (1/2" OR 3/4")
 - BOLT

NOTE: Stepped hole-formers are inherently difficult to strip out during their removal. Concrete should be thoroughly cured before attempting to remove the hole-former. Patience and care are required. Length of service may be less than a standard, non-stepped hole-former.

BLACKTHORN MANUFACTURES CUSTOM FIBERGLASS PRODUCTS.
IF YOU NEED A SIZE NOT LISTED, CALL FOR A QUOTE.

800-836-6113

937-836-9296 * sales@blackthorn-inc.com



6113 BROOKVILLE SALEM ROAD * www.blackthorn-inc.com
CLAYTON OH 45315 * sales@blackthorn-inc.com